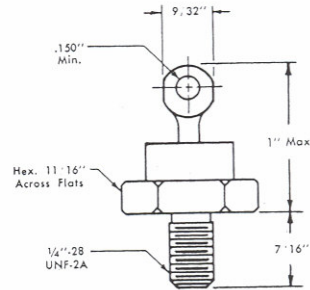
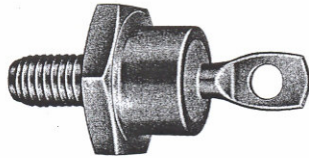

SERIES SB107

Silicon Schottky Barrier Rectifiers



ELECTRICAL RATINGS

Peak Inverse Voltage	40 VOLTS
I _o AMPS @ 95 °C Case	75 AMPS
Maximum Surge Current Single Cycle Amps	1180 AMPS
Maximum Forward Drop @ 25°C Case	
I _o Amps	75 AMPS
V _f Volts	.71 VOLTS
Maximum Reverse Current @ 25°C @ PRV	5 m AMPS
Storage Temperature °C	-65 to 175
Operating Temperature °C Jedec Style	-65 to 150 DO5

(203) 467-2591 TEL
(203) 469-5928 FAX
Email: Info@edal.com
Internet: <http://www.edal.com>

EDAL® INDUSTRIES
INC. SINCE 1958

51 Commerce St. East Haven, CT 06512