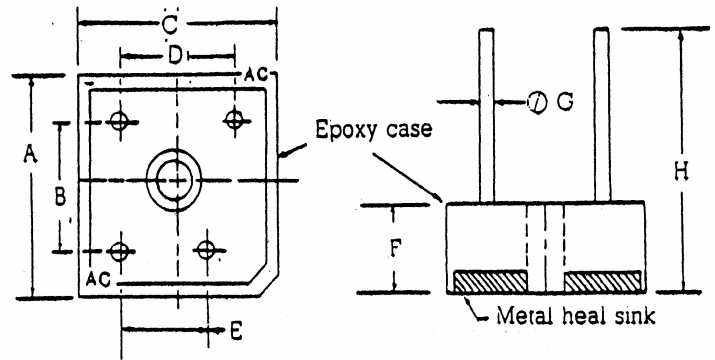


# SERIES BR1203 with Wire Leads 35 AMP SILICON FAST RECOVERY BRIDGE RECTIFIER

(PLASTIC CASE WITH METAL HEAT SINK)

DIM	INCHES		MILLIMETERS	
	MIN.	MAX.	MIN.	MAX.
A	1.12	1.13	28.4	28.7
B	0.692	0.732	17.6	18.6
C	1.12	1.13	28.4	28.7
D	0.692	0.732	17.6	18.6
E	0.43	0.47	10.9	11.9
F	0.28	0.31	7.3	7.9
G	0.038	0.042	0.97	1.07
H	1.2		30.5	



PART NUMBER	MAX AVG. RECT CURRENT If (AV) @ TAR LOAD		INPUT VOLTAGE RECOMMENDED	PIV	MAX. FORWARD PEAK SURGE CURRENT	MAX. FORWARD VOLTAGE @		MAX. REV CURRENT @	MAX. REVERSE RECOVERY TIME
	(A)	(C)	Vrms	Vrrm	Ifsm	Ta = 25° C Ir	(V) (A)	Ta = 25° C Ir	Trr
	(A)	(C)	(V)	(V)	(A)	(V)	(A)	(uA)	(nS)
BR1203-5-1-W	35	55	20	50	400	1.3	17.5	10	150
BR1203-10-1W	35	55	40	100	400	1.3	17.5	10	150
BR1203-20-1W	35	55	80	200	400	1.3	17.5	10	150
BR1203-40-1W	35	55	125	400	400	1.3	17.5	10	150
BR1203-60-1W	35	55	250	600	400	1.3	17.5	10	250
BR1203-80-1W	35	55	380	800	400	1.3	17.5	10	500
BR1203-100-1W	35	55	440	1000	400	1.3	17.5	10	500

THE PLASTIC MATERIAL CARRIES U/L RECOGNITION 94 V-O

(203) 467-2591 TEL  
 (203) 469-5928 FAX  
 Email: Info@ edal.com  
 Internet: <http://www.edal.com>

**EDAL<sup>®</sup> INDUSTRIES**  
**INC.** SINCE 1958  
 51 Commerce St. East Haven, CT 06512

FIG. 1 TYPICAL FORWARD CURRENT DERATING CURVE

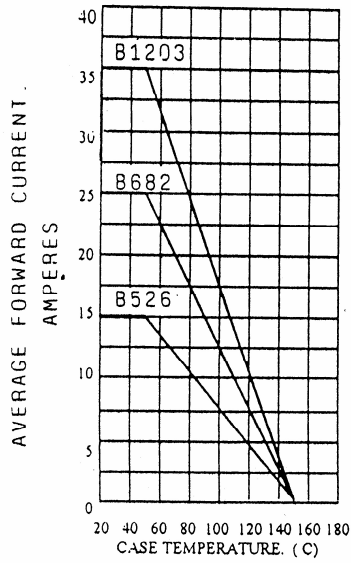


FIG. 2 MAXIMUM NON-REPETITIVE SURGE CURRENT

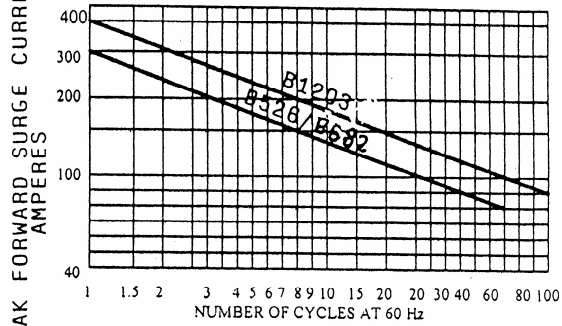


FIG. 4 TYPICAL FORWARD CHARACTERISTICS

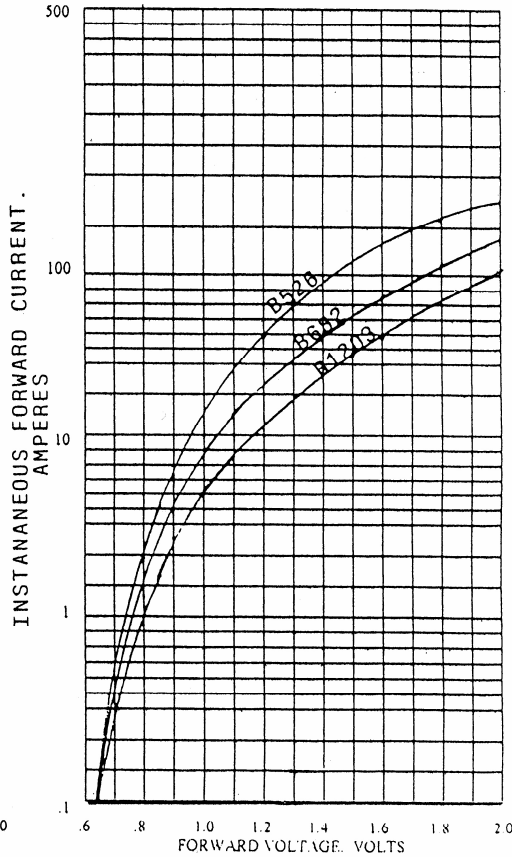
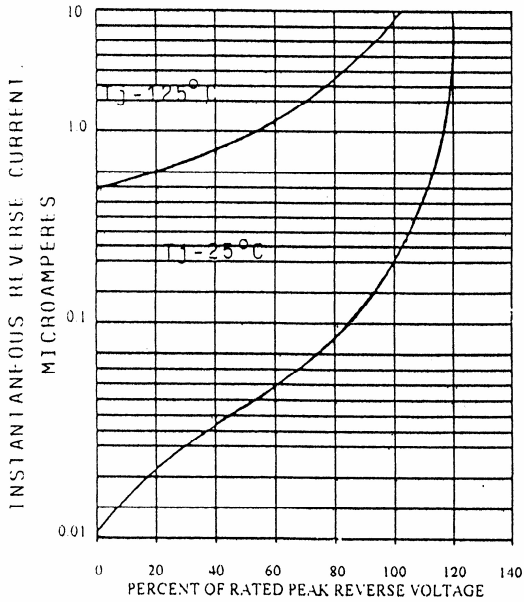


FIG. 3 TYPICAL REVERSE CHARACTERISTICS



(203) 467-2591 TEL  
 (203) 469-5928 FAX  
 Email: [Info@edal.com](mailto:Info@edal.com)  
 Internet: <http://www.edal.com>

**EDAL**® INDUSTRIES  
 INC. SINCE 1958

51 Commerce St. East Haven, CT 06512