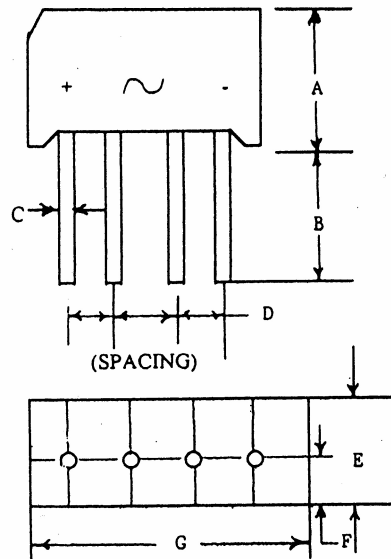


SERIES B285

Silicon Bridge Rectifier

DIM.	INCHES		MILLIMETER	
	MIN.	MAX.	MIN.	MAX.
A	0.420	0.460	10.7	11.7
B	.050		12.7	
C	0.028	0.034	0.76	0.86
D	0.14	0.16	3.60	4.10
E	0.180	0.20	4.6	5.1
F	0.039	0.055	1.0	1.4
G	.560	.600	14.2	15.2



ELECTRICAL RATINGS

MAXIMUM AVERAGE CURRENT SINGLE PHASE FULL WAVE @ 55° C I _o	1.5 AMPS
MAXIMUM SINGLE CYCLE SURGE CURRENT (IFSM)	60 AMPS
MAXIMUM FORWARD VOLTAGE DROP @ 25° C @ I _o AMPS V _F VOLTS (PER SECTION)	1.0 VOLTS
MAXIMUM REVERSE CURRENT @ PIV @ 25° C	10 uA
@PIV @ 100°C	.5 mA

PART NUMBER	PIV
B285-5-1	50
B285-10-1	100
B285-20-1	200
B285-40-1	400
B285-60-1	600
B285-80-1	800
B285-100-1	1000
B285-120-1	1200

(203) 467-2591 TEL
 (203) 469-5928 FAX
 Email: Info@ edal.com
 Internet: http://www.edal.com

EDAL[®] INDUSTRIES
INC. SINCE 1958

51 Commerce St. East Haven, CT 06512